



GpsGate SMS Proxy

Installation and Administration Guide

Version: 2.0.4

Rev: 1

Table of Contents

1 Introduction.....	3
2 Technical Requirements.....	4
2.1 Supported Operating Systems.....	4
2.2 Supported Phones.....	4
3 Installation.....	5
3.1 Software installation.....	5
3.2 Phone installation.....	5
4 Configuration.....	6
4.1 Server Side Configuration.....	6
4.2 SMS Proxy Settings.....	6
4.3 Starting the SMS Proxy.....	7
5 Logging.....	9
6 AT Console.....	10
7 Additional Information.....	11

1 Introduction

Welcome to the GpsGate SMS Proxy Installation and Administration Guide!

GpsGate SMS Proxy adds SMS support to a GpsGate Server installation. It is installed on a computer managed by you. For a successful GpsGate Proxy installation you need the following components:

- a computer with an internet connection
- a mobile phone connected to the computer that supports SMS AT-commands
- a GpsGate Server installation, your own or hosted

GpsGate SMS Proxy can be used both for your own GpsGate Server installation and a GpsGate Server Subscription hosted by GpsGate. One GpsGate SMS Proxy can be connected to one GpsGate Server installation at a time.

GpsGate SMS Proxy is very easy to install if you follow the instructions in this document. Please read the document carefully before you get started.

This document should get you through the installation quickly, but please feel free to post any additional questions in our technical forum at the following link:

<http://franson.com/forum>

Thank you for using GpsGate solutions!

The GpsGate Team

2 Technical Requirements

GpsGate SMS Proxy requires a computer with Internet access and a mobile phone that can be used as a data modem with support for AT-commands.

2.1 Supported Operating Systems

GpsGate SMS Proxy runs on the following operating systems:

- Windows VISTA
- Windows XP Professional SP2/SP3
- Windows Server 2003 SP1/SP2
- Windows 2000 SP4

2.2 Supported Phones

GpsGate SMS Proxy communicates with standard AT-commands to send and receive SMS:s through a mobile phone. We have mainly tested Motorola, Nokia and SonyEricsson phones, but many phones have support for AT-commands so you can test any phone you have.

For a list of tested phones, please have a look at the following link:

http://franson.com/forum/topic.asp?TOPIC_ID=7829

3 Installation

The instructions in this section help you install GpsGate SMS Proxy on your computer.

3.1 *Software installation*

To prepare your installation you need the GpsGate SMS Proxy package.

Download the GpsGate SMS Proxy package **GpsGateSMSProxy.zip** from <http://www.franson.com/gpsgateserver/download.asp>

Select a folder for your GpsGate SMS Proxy installation. The SMS Proxy is run from the installation directory.

Unzip **GpsGateSMSProxy.zip** to the preferred folder on your computer.

Your SMS Proxy is now ready for configuration.

3.2 *Phone installation*

Follow the installation guide for your mobile phone to install it as a data modem on your computer.

It is recommended that you connect the phone using a USB cable. This improves connection stability and also charges the phone (applicable for most phone models). You can also connect the phone over Bluetooth.

4 Configuration

To configure and connect your SMS Proxy to your GpsGate Server installation you follow the steps below.

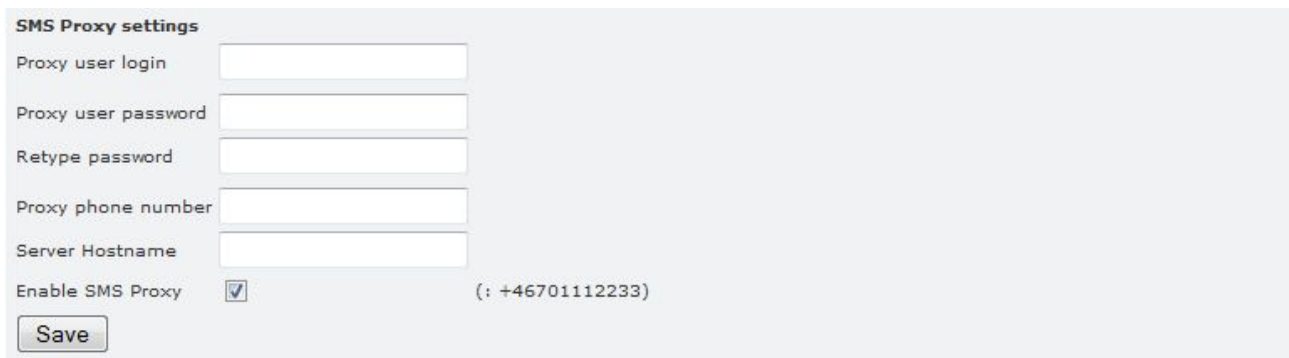
4.1 Server Side Configuration

Note: This configuration is done on your **GpsGate Server** installation!

You use the SiteAdmin application on your GpsGate Server installation to configure the server side SMS Proxy settings.

Login as SiteAdmin to your SiteAdmin application and select the “**Settings**” tab in your GpsGate Server installation.

Define the following SMS Proxy Settings on your server installation:



Proxy User Login	Create a unique user name for your Proxy User
Proxy User Password	Set a Proxy User password
Retype Password	Re-type password for confirmation
Proxy Phone Number	Set the proxy phone number in international format (e.g. +...)
Server Hostname	Enter the hostname of your server (example: yourserver.gpsgate.com)
Enable SMS Proxy	Tick the box to activate SMS functionality

This completes the server side configuration.

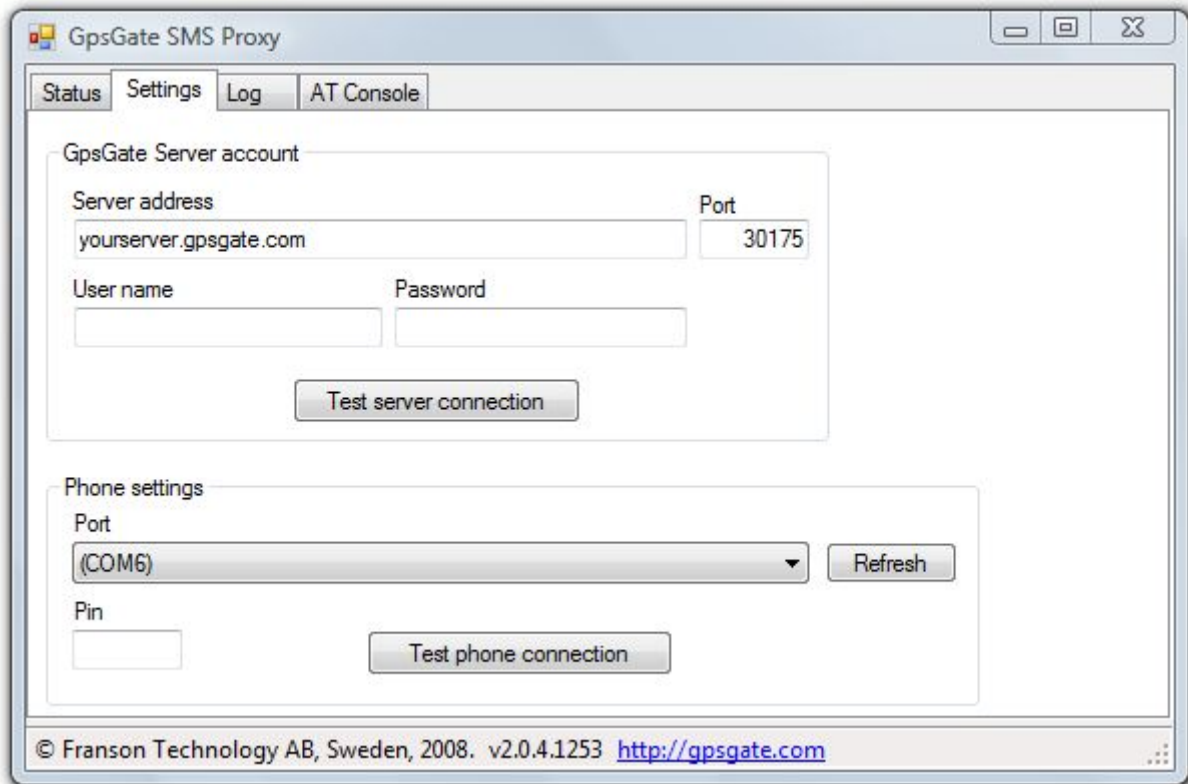
4.2 SMS Proxy Settings

Note: This configuration is done on your **GpsGate SMS Proxy** installation!

First start the SMS Proxy by double-clicking the file “**GpsGate.SmsProxy.exe**” in the installation directory.

Select the “**Settings**” tab and fill in the required information for the GpsGate Server you want to connect your SMS Proxy to. The server information has to match the information you entered on the server side in the section above.

Then select the port you have connected your phone to.



GpsGate Server account:

Server address	The hostname of your server (example: yourserver.gpsgate.com)
Port	The port number for the NMEA service on your server (Default: 30175)
User name	The Proxy user name you created in the GpsGate Server
Password	The Proxy user password

Press “**Test server connection**” to verify that your SMS Proxy can connect to the GpsGate Server.

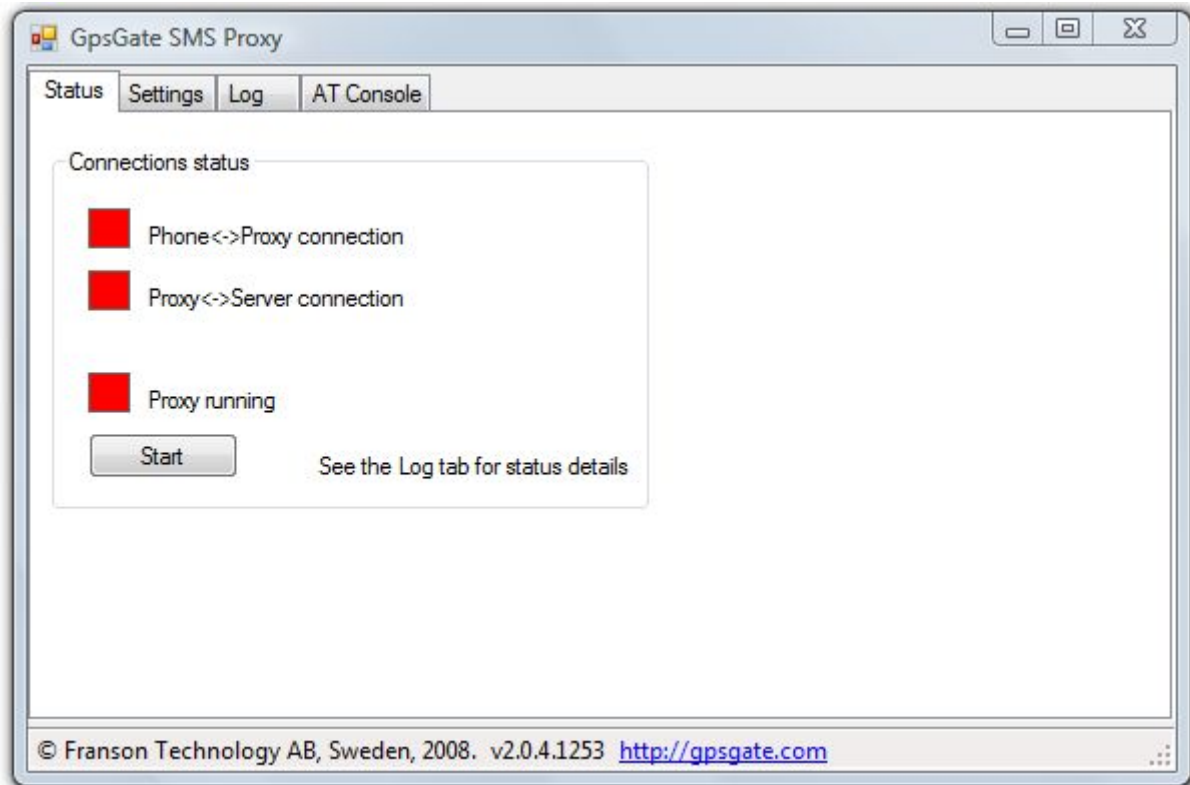
Phone settings:

Port	Select the port in the list where your mobile phone is a data modem
Pin	We recommend you to leave this blank and deactivate the Pin code check on your phone. However, if you have a PIN code on the phone SIM card, enter it here.

Press “**Test phone connection**” to verify that your phone is connected correctly.

4.3 Starting the SMS Proxy

To connect your GpsGate SMS Proxy to your GpsGate Server you press “**Start**” on the “**Status**” tab.

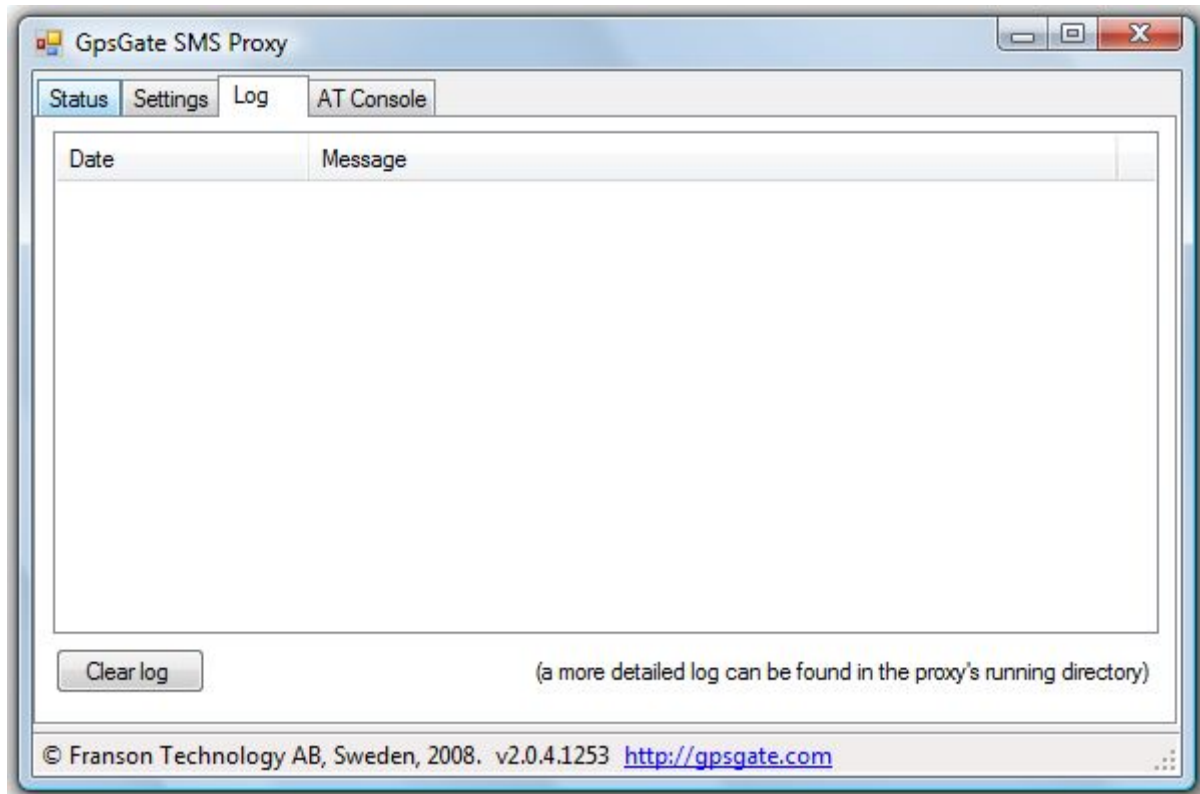


All icons turn green when connections have been established both to your phone and your server. To stop a running SMS Proxy you press “**Stop**” on the “**Status**” tab.

5 Logging

There are two places for log information in GpsGate SMS Proxy.

The “**Log**” tab in the user interface shows recent events and both in- and outgoing SMS traffic. The log is cleared every time the SMS Proxy is re-started.

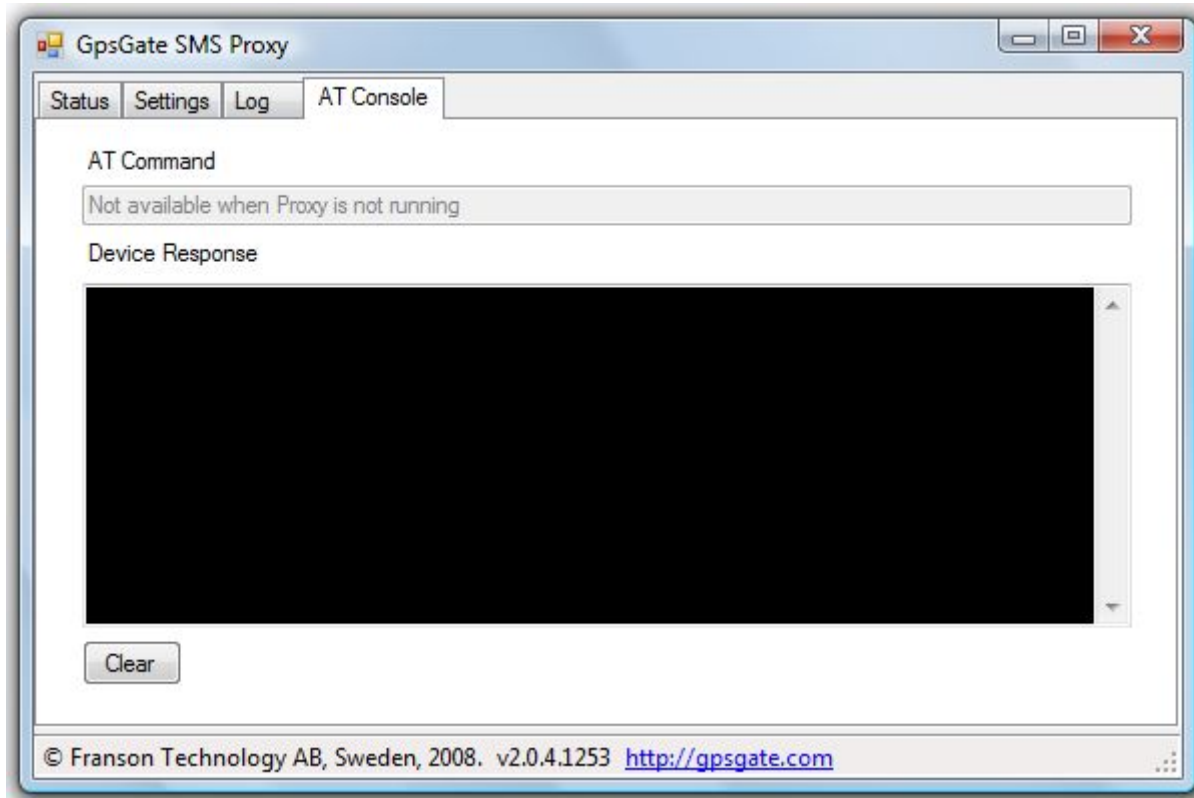


The log can also be cleared by pressing the “**Clear log**” button.

SMS Proxy is also logging events in log files placed in the application installation directory. By default a new log file is created every day.

6 AT Console

SMS Proxy includes an AT console where you can write AT commands to your phone. The console can be used to manually send AT commands to the phone to check phone compatibility.



7 Additional Information

The technical forum for GpsGate solutions covers additional aspects of GpsGate SMS Proxy installation and usage. The forum is reached by the following link:

<http://franson.com/forum>